



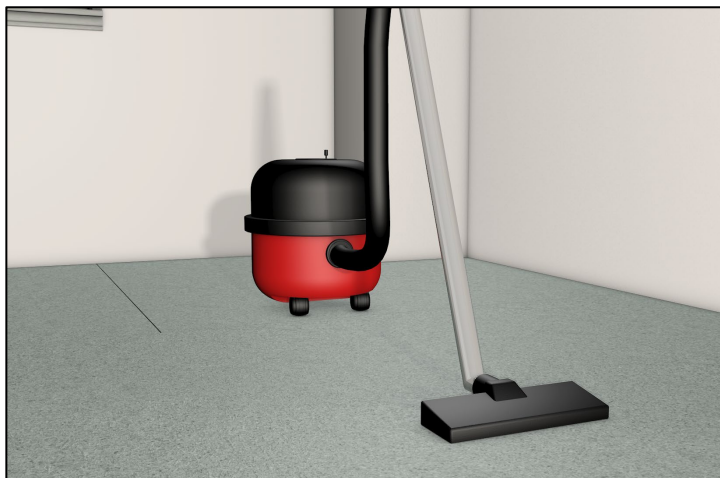
Installing the Profix® Ultra-Low Profile Screed System over a Compressed Rubber Acoustic Isolation Mat on a Separating Suspended Timber Floor

All materials must be stored between +5°C and +25°C and allowed to acclimatize to the environment in which they are to be installed (+10°C to +25°C) for a minimum of 24 hours before installation. Materials must not be exposed to direct sunlight.

PREPARE THE TIMBER FLOOR

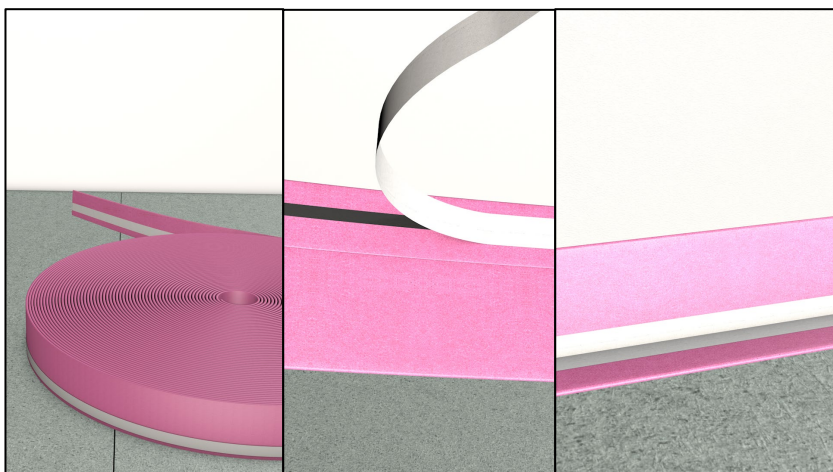
Ensure the floor is capable of supporting the required loads and that its surface flatness meets the requirements of the chosen final floor covering.

Old coatings, adhesives or other surface contaminants should be removed and the floor vacuumed to remove any dust or debris.



Profix® PE Edge Insulation should now be fitted around the perimeter of each room and to any other vertical upstands.

Peel back the release paper on the 25mm width to expose the adhesive and stick it down to the floor. The 25mm width should form a right-angle with the 50mm width standing vertically up the walls and other upstands.

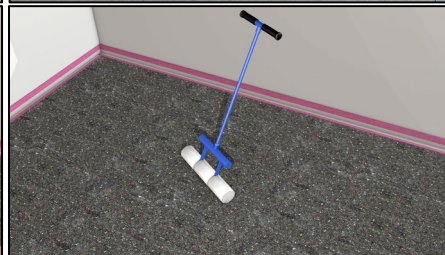
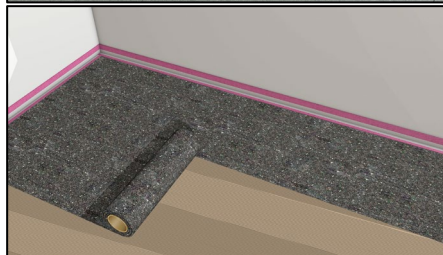
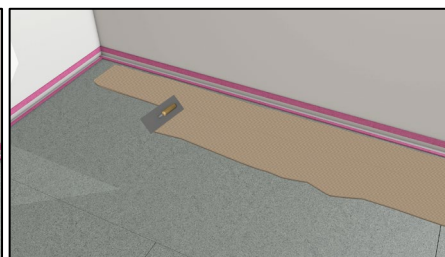
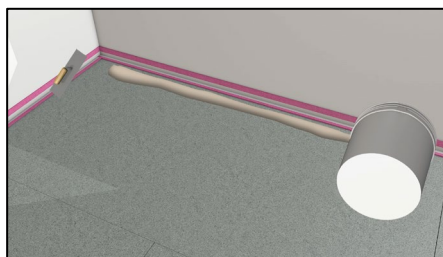


INSTALL THE ACOUSTIC ISOLATION MAT

Apply a suitable water-based acrylic adhesive to the floor using a notched trowel in accordance with the manufacturer's instructions. Best results will be achieved, particularly for very porous surfaces, by first applying a dispersion primer diluted in accordance with the manufacturer's product data sheet and allowing it to become touch-dry before applying the adhesive.

Lay the acoustic isolation mat in accordance with the manufacturer's installation instructions, making sure to abut the outer edges of the mats with the Profix® PE Edge Insulation.

All joints between mats should be tightly butted together leaving no gaps.



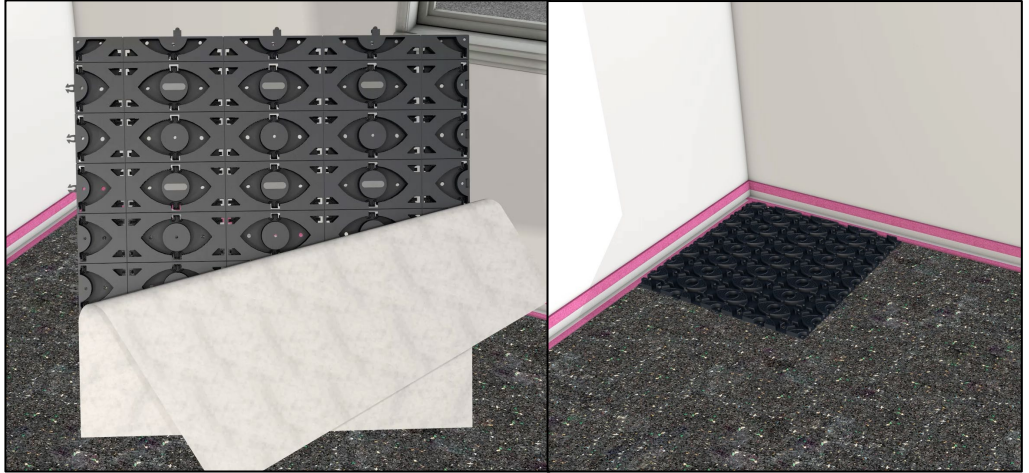
Smooth out the surface of the mats using a roller, pressing down firmly to ensure good adhesion and to remove any air bubbles.

Foot traffic should be avoided for 24 hours, while the adhesive dries, before installing the Profix® Panels onto the acoustic isolation mats.

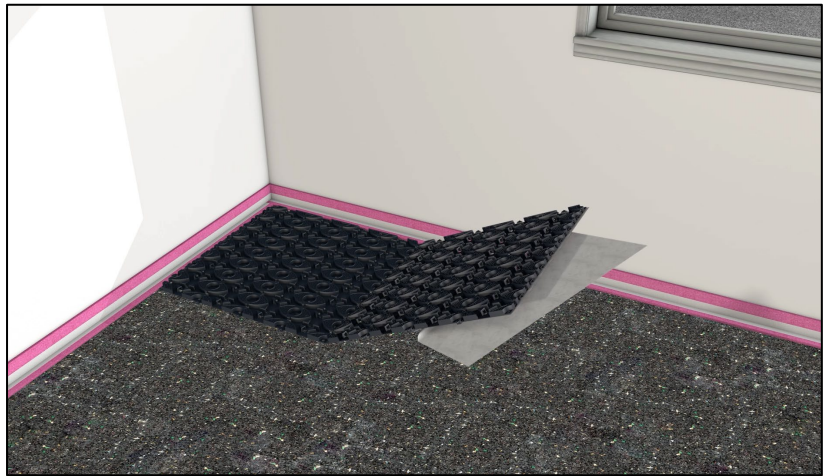
INSTALL THE PROFIX PANELS

Peel off the backing sheet on the first panel to expose the adhesive.

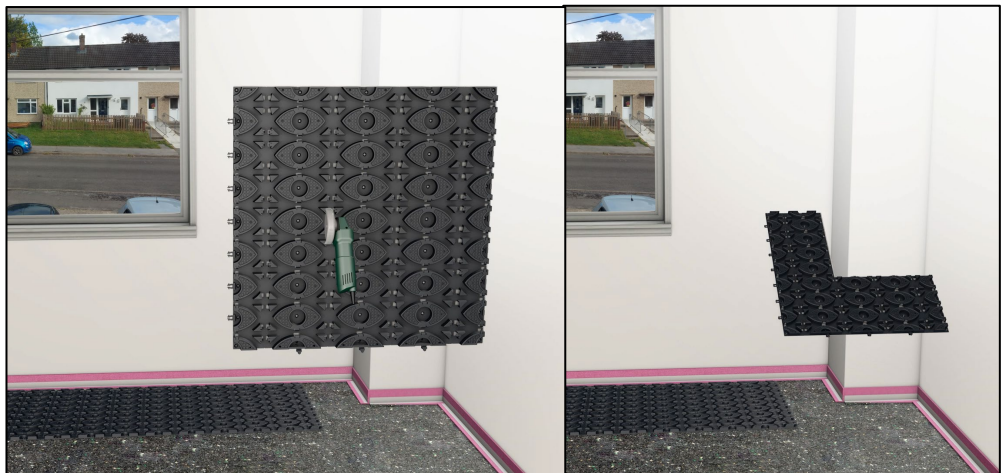
Place the first Profix® Panel in the corner of the room and abut it to the edge of the Profix® PE Edge Insulation, ensuring that the 'arrow heads' of the male snap clips are facing to the LEFT.



Place the second Profix® Panel with the arrow heads facing to the left and engage them into the gates along the right hand edge of the first panel. Peel off the backing sheet on the second panel to expose the adhesive and stick it down.



Stick down the panels as before to complete the first row, cutting the final panel in the row to size if required.

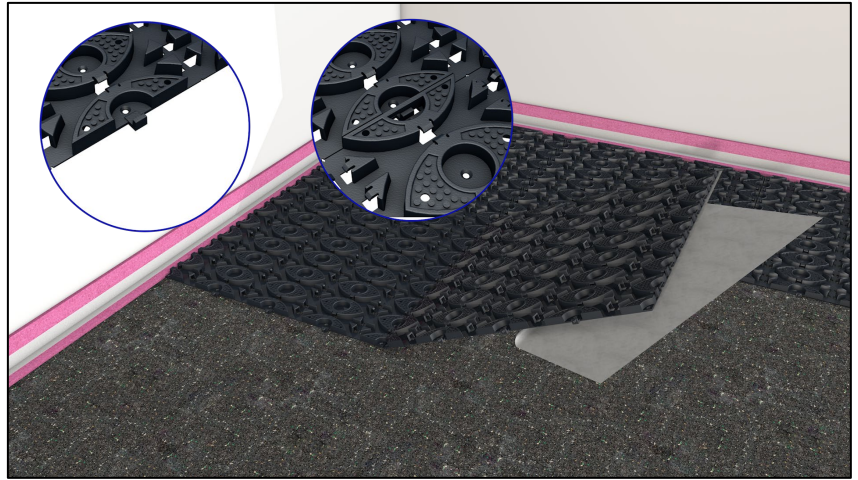


INSTALL THE PROFIX PANELS

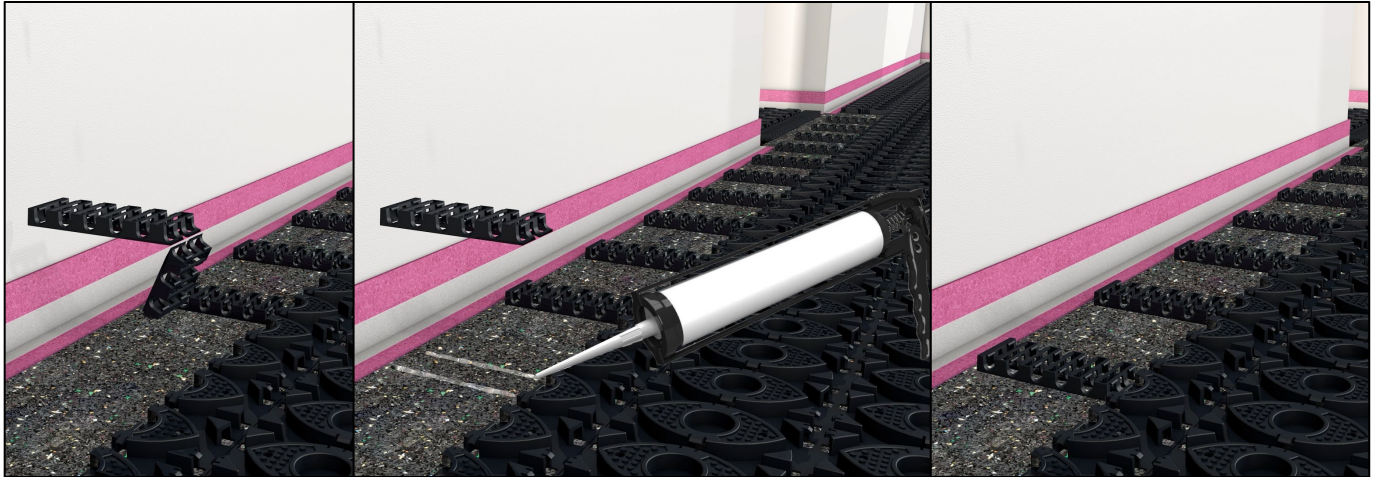
Commence laying the second row by positioning the first panel in the second row with the 'arrow heads' facing to the LEFT and ensure that as the panel is hinged down to stick it to the floor the 'fingers' of the adjacent panel in the first row locate into the 'gates' in this panel.

Continue laying the second row of panels until complete, cutting the final panel in the row to size if required.

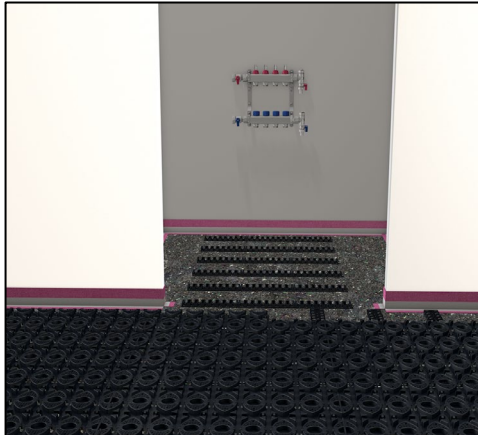
Continue laying the panels a row at a time.



Profix® Clip-Rails, supplied within the Profix® Manifold & Highway Pack, can be used to create a highway along the edge of a room to facilitate additional pipe runs from and back to the manifold. The Profix® Clip-Rails should be bonded to the acoustic isolation mats using a high-grab fast curing MS Polymer Adhesive (or similar). The adhesive should be allowed to fully cure before attempting to clip the UFH pipes into the rails. Mechanical fixings (eg. screws) should never be used to fix down the Profix® Clip-Rails as doing so would compromise the performance of the acoustic isolation mats.



Profix® Clip-Rails can also be used in close proximity to the manifold to secure pipework at close centres prior to transitioning into the Profix® Panels themselves.

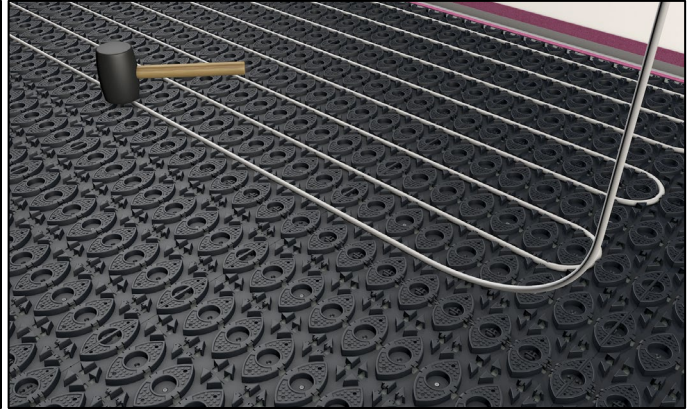


Connect the first pipe run to the manifold.

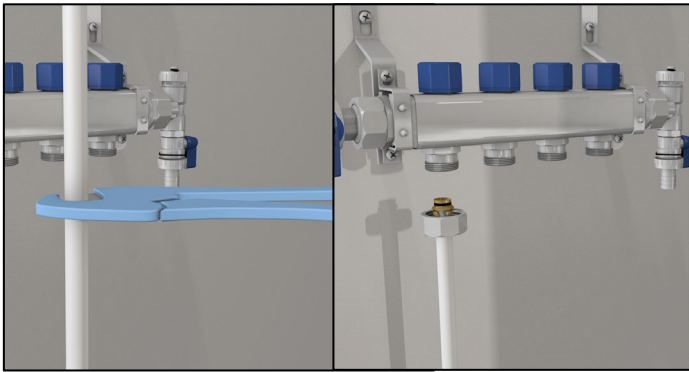


INSTALL THE UFH PIPEWORK

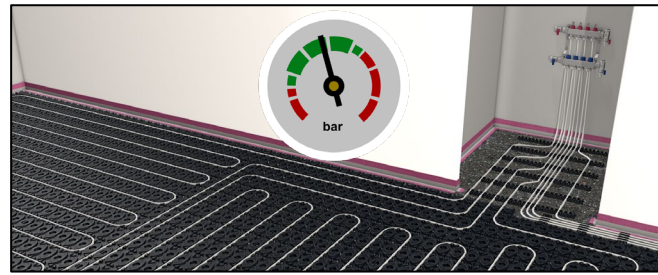
Use a rubber mallet to help secure the pipe into the Profix® Clip-Rails and the Profix® Panels.



Return the first pipe run to the manifold.



Connect all additional pipe runs to the manifold. Pressure test the system to ensure there are no leaks. Suitable expansion joints should be fitted at all door thresholds.

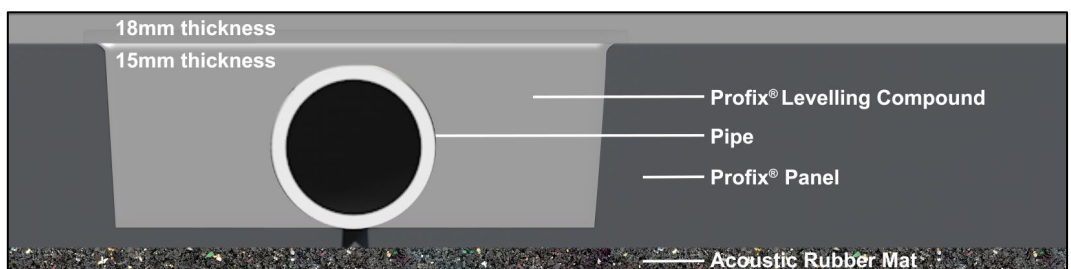


MIX THE PROFIX LEVELLING COMPOUND

Pour 5.0 litres of cold, clean water into a clean container. Add sack contents (25 kg) whilst stirring vigorously until a smooth and lump-free compound is obtained. Use a heavy-duty drill with a suitable levelling compound mixer attachment (minimum 650rpm).



Apply Profix® Levelling Compound to **minimum** 15mm thickness for tiles or engineered wood flooring. Apply Profix® Levelling Compound to **minimum** 18mm thickness for carpet or vinyl flooring.

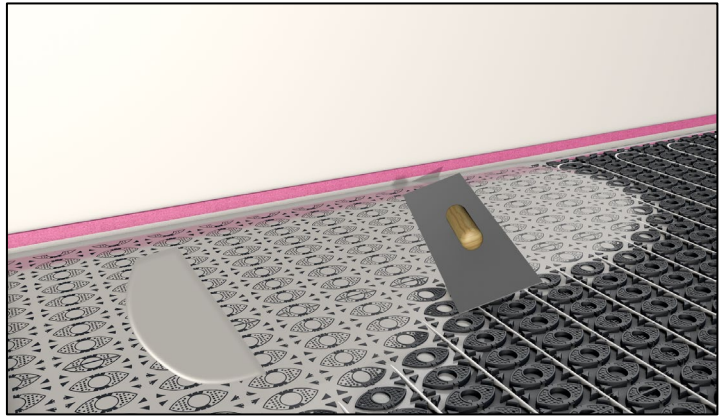


POUR THE PROFIX LEVELLING COMPOUND

Pour the first batch of Profix® Levelling Compound, starting in one corner and working in a continuous line. Repeat with subsequent batches.



Once sufficient compound has been applied it can be distributed to the required depth using a smoothing trowel or smoothing rake. The surface finish can be improved using a spiked roller.



Foot traffic after 4 hours in good drying conditions.

Floor coverings after 24 hours in good drying conditions.

